

### Dimension

170 \* 91.8 mm

### Chipset

Pericom PI7C9X2G608GP Gen 2 Switch

Intel i211-AT GbE LAN

### Feature

1. 4 \* Intel i211-AT Gigabit LAN
2. LAN1 & LAN2 supports 1 pair of Bypass LAN
3. LAN3 & LAN4 supports 1 pair of Bypass LAN
4. Supports Wake on LAN S1/S3/S4/S5 mode

### Interface

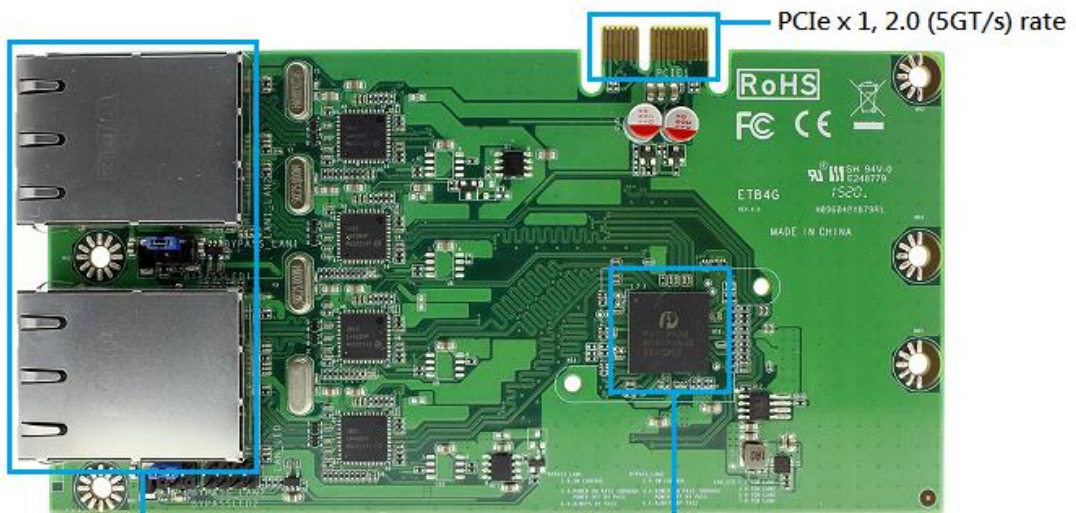
PCIe x 1, 2.0 (5GT/s) rate

### Application

VPN, UTM, Network Bandwidth Controller, Mail Filter, Virus Filter

### Motherboard Compatibility

Jetway NF9HB-2930 and NF9HG-2930



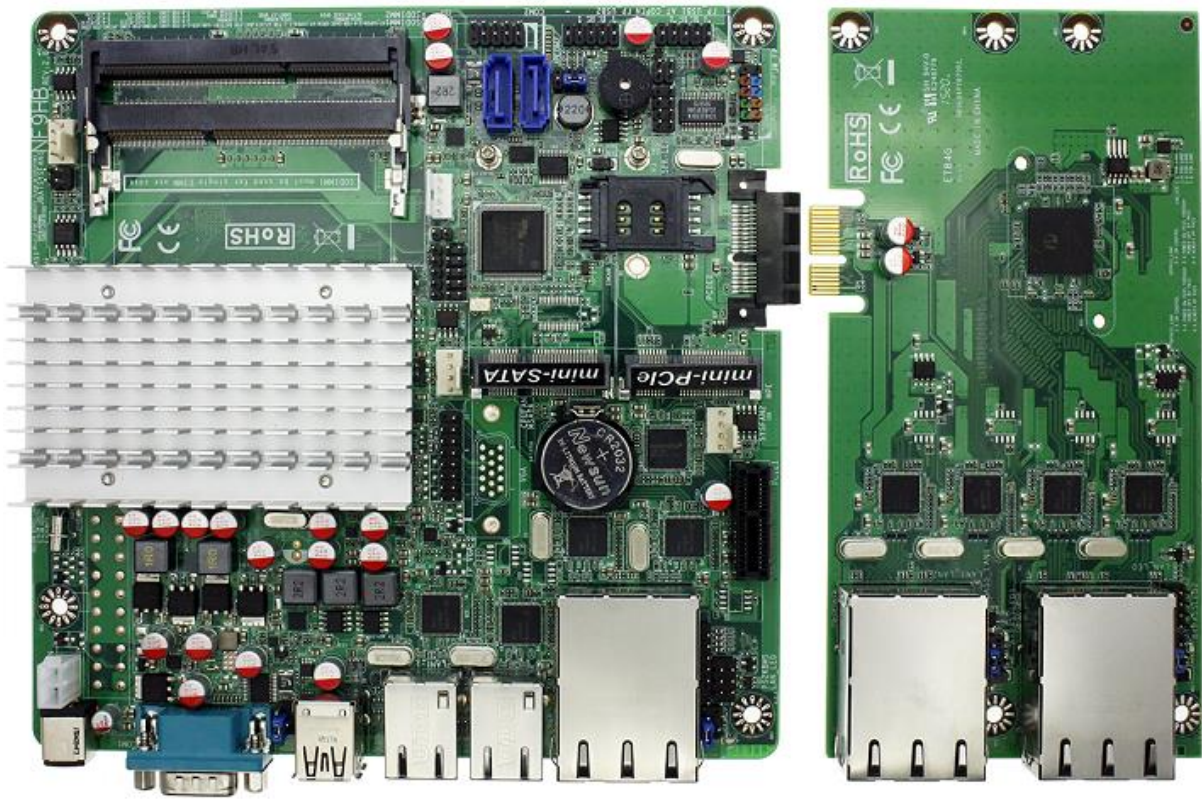
4 \* Intel GbE LAN  
Support Wake on LAN  
S1/S3/S4/S5 mode

Pericom P17C9X2G608GP Gen2 Switch  
Intel i211AT GbE LAN



LAN1 & LAN2 supports  
Bypass LAN function.

LAN3 & LAN4 supports  
Bypass LAN function.



Example showing how the ETB4B is connected.



Rear I/O example with NF9HB-2930 or NF9HG-2930 motherboards.

