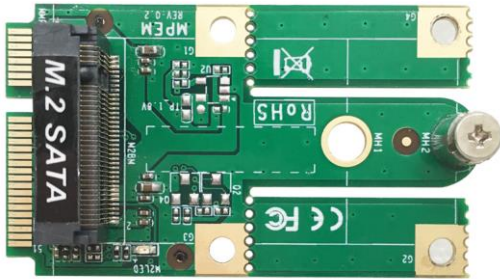


**JADMP2M**



**Dimension:** 30.00 x 51.0 mm

**Feature:**

1. mSATA to M.2 (M-key) transfer card for Storage application
2. Support M.2 M-key 2242 card

**Interface:**

SATA Interface

Front Side	Back Side
<p>*** The MH1 Screw hole is unavailable to this product.</p>	