

27.0" TFT Fanless Touch Panel Computer with Intel® Tiger Lake i5-1145G7E 1.5GHz Quad Cores Processor

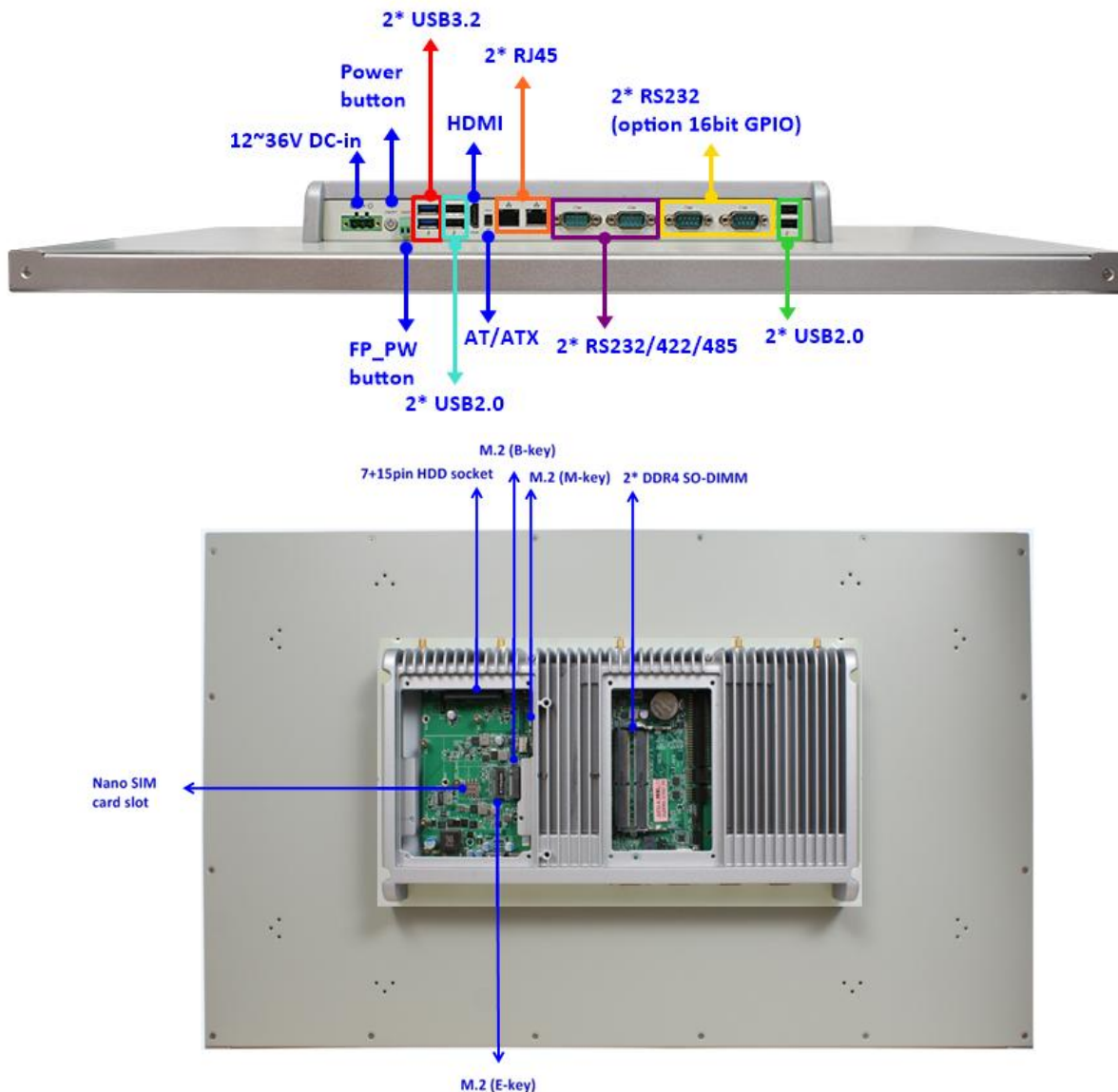
Features

1. 27.0"300 nits TFT LCD with LED backlight
2. LG in-cell 10-points Multi Capacitive Touch
3. A true Flatand Slim Design, Clear Image, support Cover-Glass Elimination
4. Support for easy HDD and DARM installation
5. Support Cable less design
6. 12-36V DC-input Support, with Electrical Over Stress(EOS), OVP design



intel. FC CE RoHS COMPLIANT

I/O Diagram



Specifications

Display

- Rugged protection, metal front bezel
- 27.0" With LED Backlight
- 300 nits
- 16.7m display color
- 1920 x 1080 @60Hz resolution
- 178°/178° viewing angle (H/V)
- 0.1038 x 0.1038mm pixel pitch
- 16:9 aspect ratio
- 1000:1 contrast ratio
- 13ms response time

Case

- Aluminum panel
- Iron case
- White color
- Spray paint coating requirement

Storage

- 1* 2.5" SATA HDD
- 1* M.2 M key (2242/2280, PCI-Ex4)

I/O Connector

- 2* USB3.2 (Gen1)
- 4* USB2.0
- 2* RS232/422/485
- 2* RS232 (option 16bit GPIO)
- 1* HDMI
- 1* AT/ATX Mode Button
- 2* RJ45(1* Intel® I225-V 2.5GbE, 1* Intel® I219LM GbE)
- 1* 12~36V DC-in Locking Jack
- 1* Power button
- 1* 2pin Front Power button

Power Consumption

48W

Compliance

CE, FCC, Option

Temperature

- Operating Temperature: -10 ~ 50° C
- Storage Temperature: -20 ~ 70° C

Touch Screen

- Projected capacitive type (LG in-cell Touch)
- 597.888 x 336.312mm ±0.2mm active range
- Surface Hardness $\geq 3H$ (JIS-5400)
- Support High Touch Performance
- Support Strengthened Polarizer for in-TOUCH
- Support High Picture Quality
- Support Low Reflection / Deep Black
- Support No deterioration of PQ caused by TOUCH Film
- Support Low color Shift
- Support Stable Touch without Flash

Main System

- Intel® Tiger Lake i5-1145G7E 1.5GHz/QC processor
- 2* DDR4 SO-DIMM (Max 64GB)
- 256MB SPI Flash ROM
- Watchdog Timer 256 levels, 0~255 sec.
- OS Support Windows 10 / 11/Linux

Expansion

- 1* M.2 E key (2230) for WIFI
- 1* M.2 B key (3042/3052/6570) for 4G/5G Module (4pcs Built in Antenna)

Power Source

- AC version: 100~240V AC-DC 90W power adapter or
- DC version: 12VDC with over current protection fuse

Dimensions

611.20x359.18x59.00mm

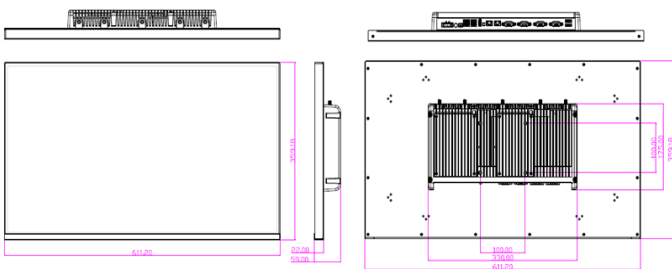
Safety

- Shock: 1ms duration
- Vibration: 5~500Hz/1 Grms

Warranty

2 Years Limited Warranty (Panel and Touch is only Warranty 1 Year)

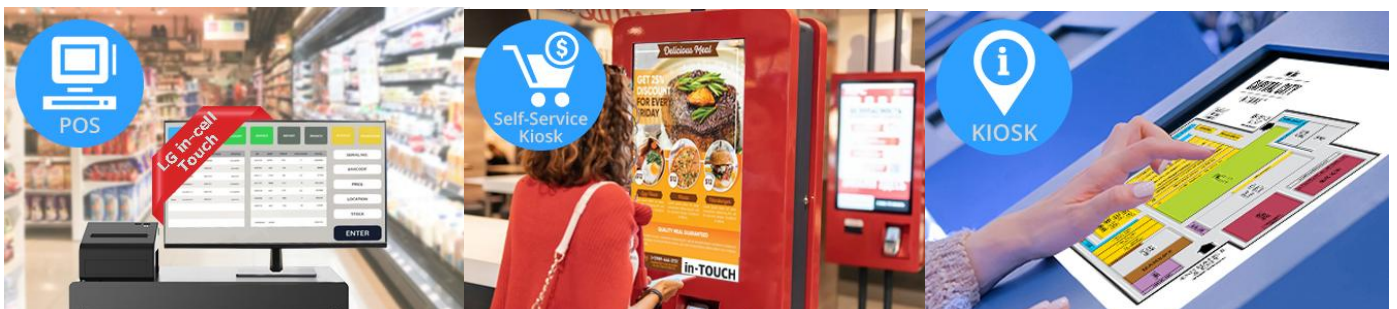
Mechanical Drawings (Unit=mm)



Standard Accessories

Part Number	Description
HPC270C-DCP145G7E	HPC270C-DCP145G7E
Change according to shipping area	Power cord
	90W AC-DC Adapter

Application

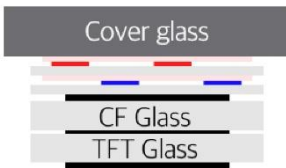




Why LG in-TOUCH

01 Strengthened Polarizer for in-TOUCH

Conventional



in-TOUCH



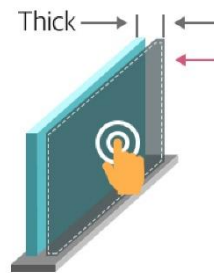
- By eliminating Cover Glass allow Touch TV Design "Slim & Light"
- Extra mechanical design is required for attaching thick and heavy C/G

- Enhanced Surface Hardness of Polarizer

	Normal POL	in-TOUCH POL
Pencil scratch hardness	2H	4H
Abrasion Resistance 1)	10cycles	800cycles

1) Based on testing with 'Steel wool'

Conventional



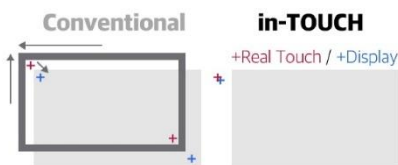
in-TOUCH



Cover Glass (IR / GFF)

02 High Touch Performance

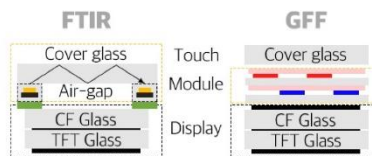
- Touch & Display Matching Accuracy



	IR Spread	in-TOUCH(43")
Accuracy	3.8mm+a	<2.0mm

03 Simple SCM & Assembly

- Simplified Assembly & Supply Chain
- Touch Module + Touch Board + Display
- Mechanical structure simplified for assembly



04 High Picture Quality

- Low Reflection / Deep Black
- No deterioration of PQ caused by Touch Film
- Wide Viewing Angle
- Low Color Shift
- Stable Touch without Flash

