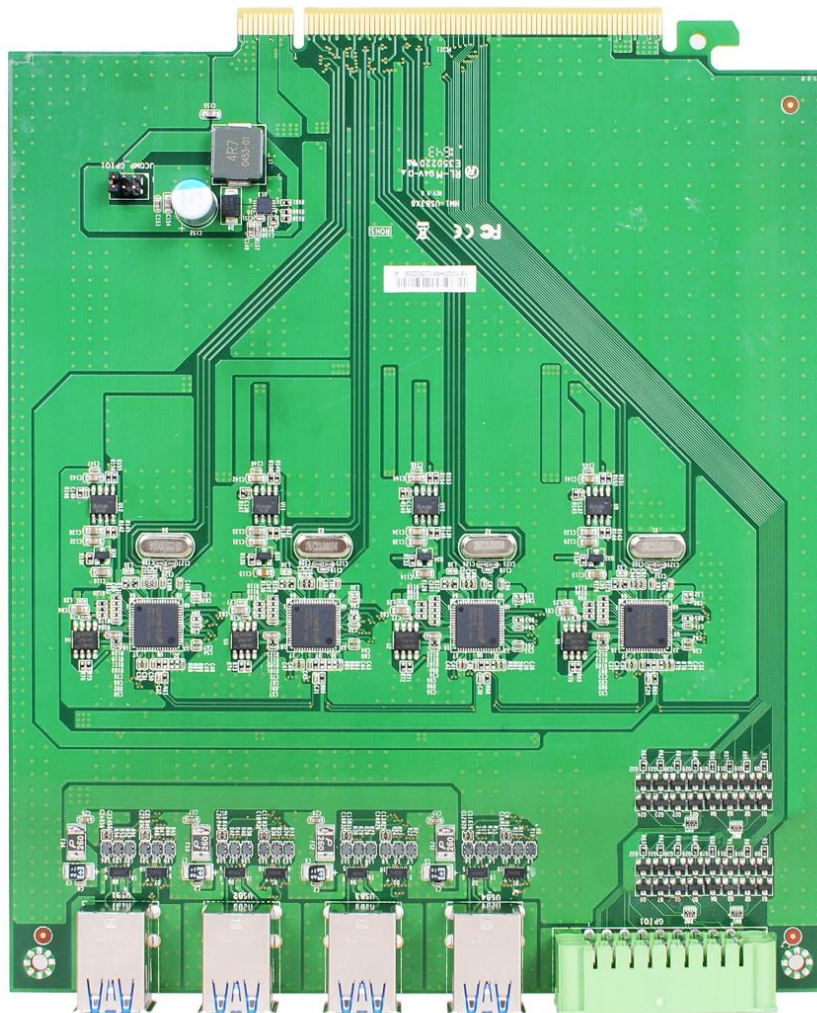
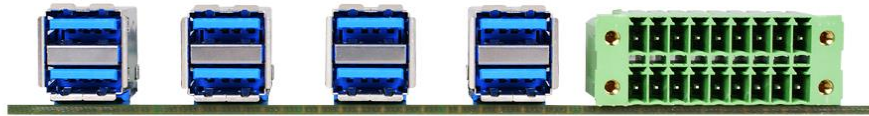


HM1-USB3X8

Jetway HM-1000 Expansion Module
8 USB 3.0 (5Gb/s) / 16-bit GPIO

Features

1. Compatible with Jetway HM-1000 Rugged Expandable Embedded Barebone (Proprietary)
2. 8 * USB 3.0 ports (ASMedia 1042A)
3. 16-bit GPIO (5V/12V/24V power)



Jetway Computer Corporation
Phone: 510-857-0130 Fax: 510-857-0138
8058 Central Ave., Newark, CA 94560
www.jetwaycomputer.com

