

Side-port Ethernet Expansion Module



ETB4G

Dimension

170 * 91.8 mm

Chipset

Pericom PI7C9X2G608GP Gen 2 Switch

Intel i211AT GbE LAN

Feature

1. 4 * Intel i211-AT Gigabit LAN
2. Support Wake on LAN S1/S3/S4/S5 mode

Interface

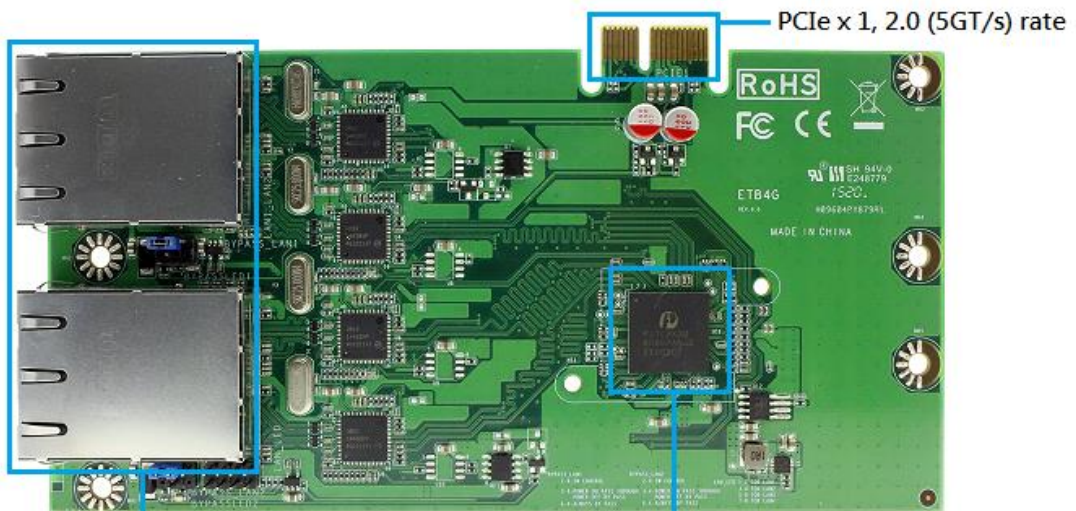
PCIe x 1, 2.0 (5GT/s) rate

Application

1. VPN
2. UTM
3. Network bandwidth controller
4. Mail spam
5. Virus spam

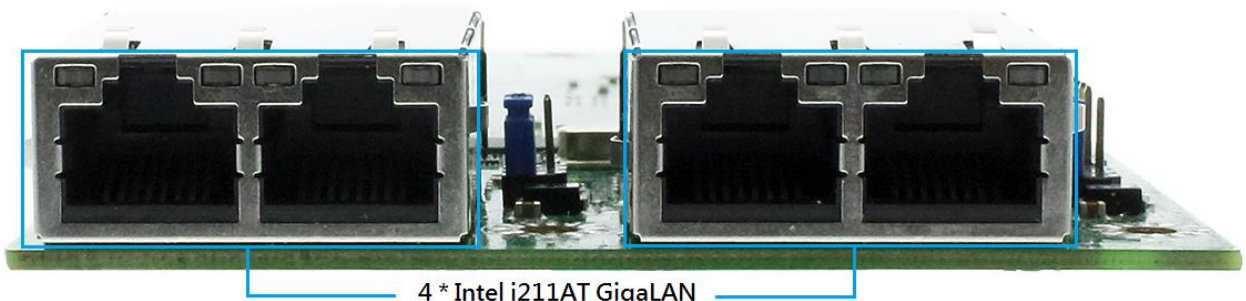
Motherboard Compatibility

Jetway NF9HB-2930 and NF9HG-2930

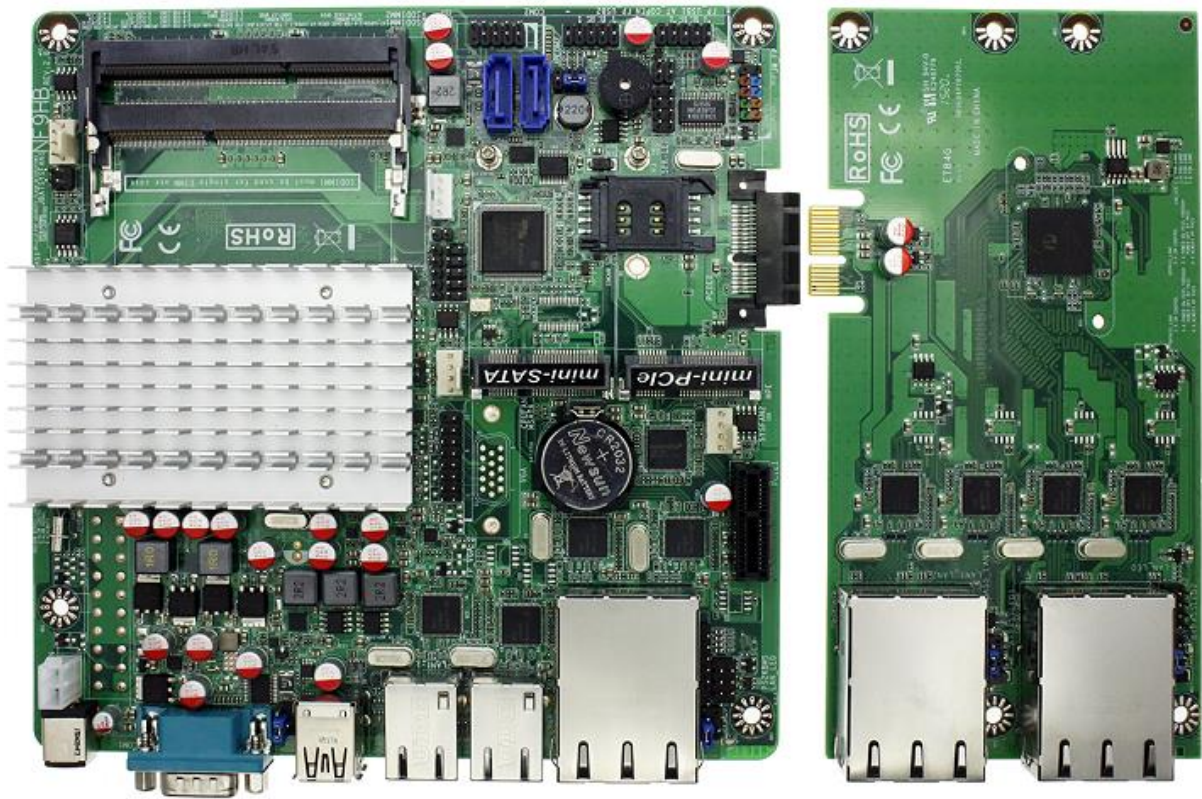


4 * Intel GbE LAN
Support Wake on LAN
S1/S3/S4/S5 mode

Pericom P17C9X2G608GP Gen2 Switch
Intel i211AT GbE LAN



4 * Intel i211AT GigaLAN



The figure shown JETB4G plug to the JNF9HB-2930



The figure shown the rear I/O

