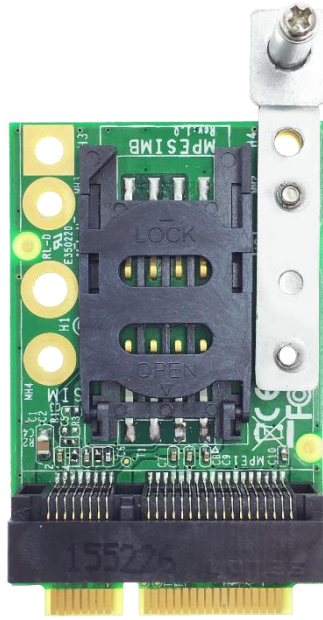
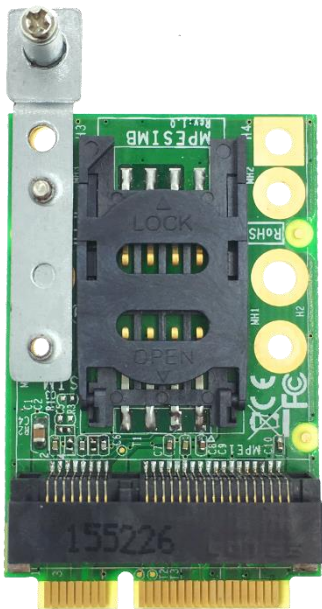




1. **Dimension:** 51.6 x 32.4 mm
2. **Chipset:** N/A
3. **Feature:** Add full-size mini-PCIE slot with SIM card Holder
4. **Interface:** Mini PCI Express
5. **Accessories:** Included mounting bracket allows for mounting in any half-size or full-size mini-PCIE slot, left or right mounting



*mini-PCIE modem not included, shown for reference only