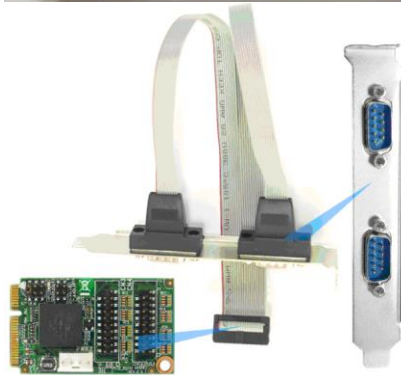
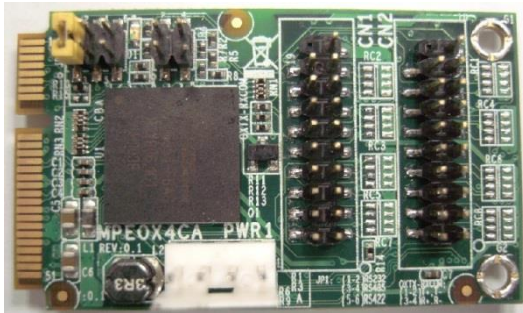


ADMPEOX4CA

4-port Serial Expansion
Mini-PCI Express Expansion Card



Dimension: 30 x 50.95 mm

Chipset: Oxford OXPCIe954

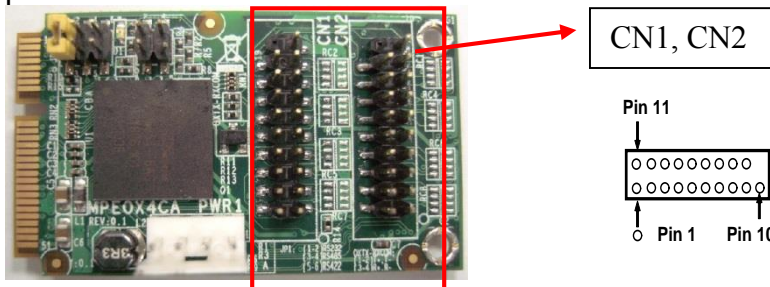
Features:

- Support 3 * RS-232 ports & 1 * RS-232/RS-422/RS-485 port
- Asynchronous baud rates up to 15Mbps
- RoHS Compliant
- Two 25cm cables included with RS-232 ports on full height bracket

Compatibility:

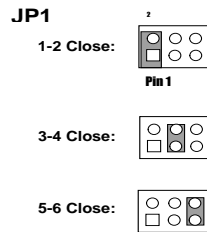
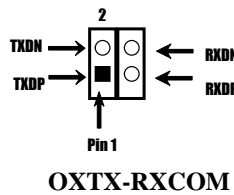
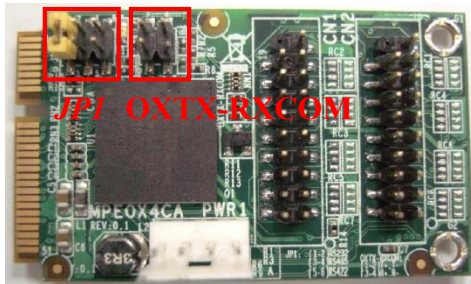
- All motherboards with full-size Mini-PCIE slot

1. pin headers



Pin Number	Pin Define	Pin Number	Pin Define
Pin1	-DCD1	Pin11	-DSR1
Pin2	SIN1	Pin12	-RTS1
Pin3	SOUT1	Pin13	-CTS1
Pin4	-DTR1	Pin14	-RI1
Pin5	GND	Pin15	
Pin6	-DCD2	Pin16	-DSR2
Pin7	SIN2	Pin17	-RTS2
Pin8	SOUT2	Pin18	-CTS2
Pin9	-DTR2	Pin19	-RI2
Pin10	GND		

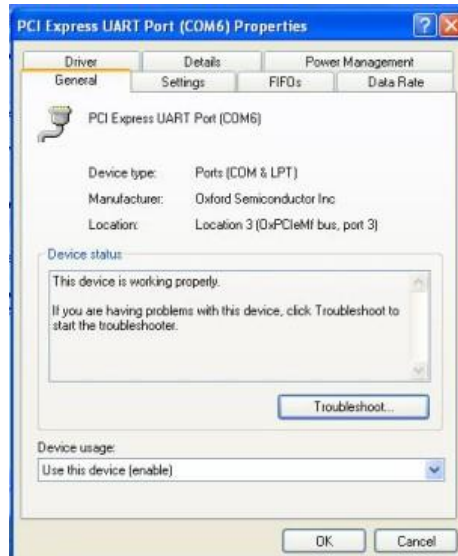
2. RS485/RS422 :



1-2 short	RS232
3-4 short	RS485
5-6 short	RS422

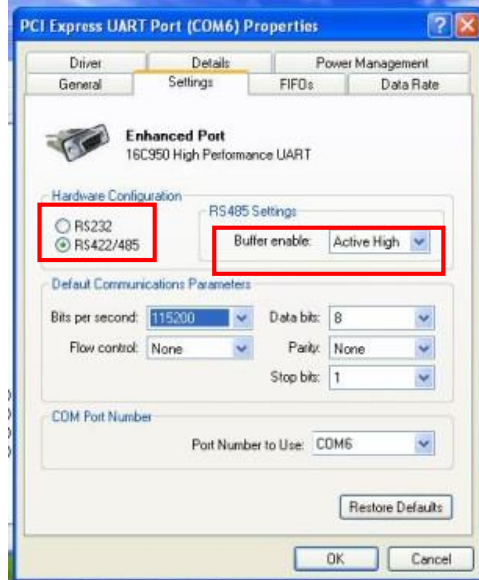
Port 3 supports multi function RS-232/RS-485/RS-422
 When configuring RS-422/RS-485, you must first change hardware configuration to RS-485 and Buffer enable to “ active high ” .

Step1:
 Find the port3 device 1n the device manager



Step2:

1. Hardware configuration change to “ RS422/485 “
2. RS485 settings change to “ Active high “



3. POWER pin Header (PWR1) :

Pin1	5VCC
Pin2	GND
Pin3	GND
Pin4	NC

*Power must be connected.



Jetway Computer Corporation
8058 Central Ave., Newark, CA 94560
Phone: 510-857-0130 Fax: 510-857-0138
www.jetwaycomputer.com

