

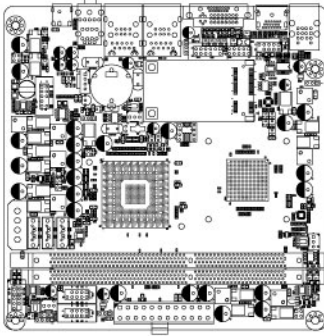
130x180mm



Single Board Computer

Jetway Information Co.,Ltd.

NC63-LF



1. NVIDIA GeForce 9300/nForce 730i (MCP7A-ION) Chipset
2. Support INTEL[®] Atom 230/330 Processors
3. Solid Polymer, long life capacitors
4. Support 3 Serial ATA2 3Gb/s connectors
5. Support 1080i and 1080p and HDCP
6. Support Microsoft DirectX 10
7. Supports DVI & HDMI ports
8. Supports Dual Gigabit LAN
9. Integrated ALC662 HD Audio CODEC with 6-CH
10. Support Watch dog Technology
11. ITX Form Factor(17cm x 17cm)

Mainboard Specifications

■ CPU	■ Supports INTEL Atom N230/N330 Processors
■ Chipset	■ NVIDIA GF-9300 (MCP7A-ION) chipset
■ Memory	■ 2 * 240-pin DIMM Sockets for un-buffered Dual Channel DDR2 800/667 up to 8GB
■ Storage	■ 3* Serial ATA2 3Gb/s connectors
■ Audio	■ Realtek ALC662 6-Channel HD Audio CODEC w SPIF in and out
■ Ethernet LAN	■ 2 * Realtek RTL8111DL PCI-E Gigabit Ethernet LAN
■ USB	■ Embedded 12 * USB 2.0
■ Special Features	<ul style="list-style-type: none"> ■ Advanced Power Design that supports the latest Socket ATOM 230/330 CPU ■ Support Watch dog Technology ■ Support CPU Smart FAN & DC FAN & ACPI S3
■ Rear Panel I / O	<ul style="list-style-type: none"> ■ 6 * USB 2.0 ports ■ 1 * PS/2 Mouse & Keyboard Combined connector ■ 2 * RJ-45 ports ■ 1 * Audio I/O connector W/SPDIF in and out ■ 1 * VGA port & 1 * DVI-D port & 1 * HDMI port ■ 1 * 12V DC Jack & 1 * WiFi Jack
■ Internal I / O	<ul style="list-style-type: none"> ■ 3 * USB 2.0 headers for 6 USB 2.0 ports ■ CPU / Chassis Fan connectors; ■ 1 * 20-pin ATX Power connector ■ CD / AUX Audio in&1 * Serial Port header ■ 1 * GPIO header ■ 1 * MINI PCI-E connector ■ 1 * Parallel header
■ BIOS	■ Award 8MB DIPFlash ROM
■ Form Factor	■ Mini ITX Form Factor(17cmx17cm)