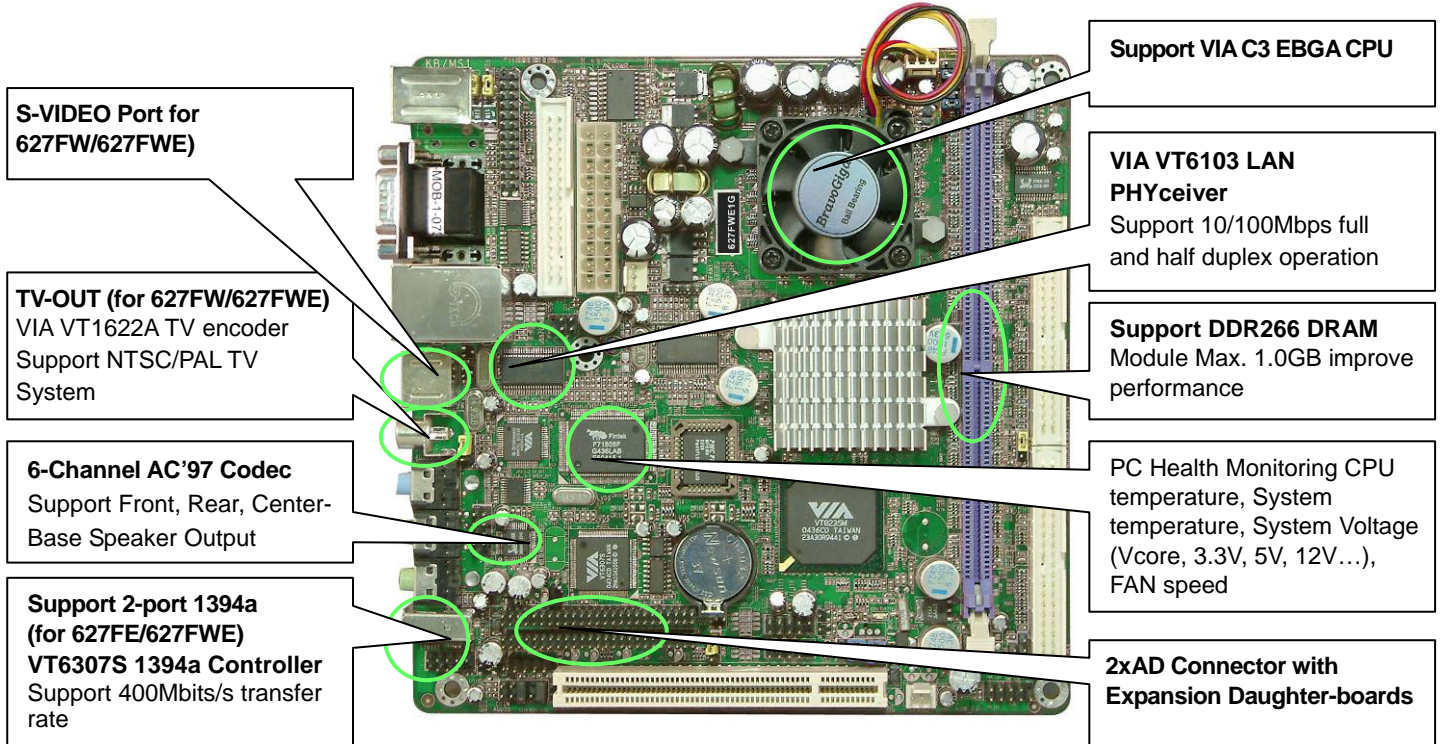


627F/627FE 627FW/627FWE

VIA VT8623(CLE266) CHIPSET With 3D
AGP VGA & Software Audio Controller
with AC'97 CODEC / ATA133 /LAN /USB2.0
VIA C3 EPGA CPU Mini ITX Main Board

Support VIA C3 EPGA CPU/ 1394/ Expansion Daughter-board

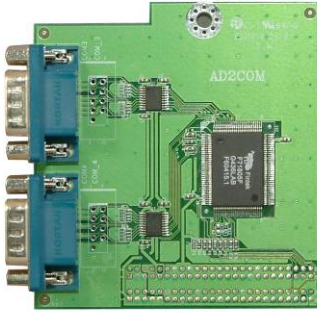


- Processor**
- Support VIA C3 processor in EPGA packaging, for 133MHz Front Side Bus Frequency
- Chipset**
- VIA VT8623 North Bridge
 - VIA VT8235 High Bandwidth Vlink Client South Bridge
- Expansion Slot**
- Support 1xPCI Slot (PCI 2.2)
- System Memory**
- 1 x 184-pin DDR Module Sockets Support Max 1GB, 2.5V DDR266 DDR SDRAM
 - Support 8/16/32/64MB frame buffer
- Magic Setting**
- Support CPU Front Side Bus step by step setting in BIOS SETUP let users have many choice when use over-clock function
- On board LAN**
- Support IEEE 802.3 10/100 BASE T Standard
 - Support Boot On LAN function
- Ultra DMA 133**
- Support 2 x Ultra DMA 133 IDE Interface (Up to 4 IDE Devices & 133MB/s transfer rate)
 - ATAPI IDE CD-ROM, CD-R,CD-RW and LS-120 Support

- PC'99 Colorful I/O Ports**
- 6xUSB 2.0 Ports, 1xParallel Port, 1xVGA Port, 2xSerial Ports(1xheader,1xConn.)
 - 1xPS/2 Keyboard Port, 1xPS/2 Mouse Port, 1xFloppy Port
 - Line-in/out/MIC Audio Ports
- On Board 1394a Port (for 627FE/627FWE)**
- Compliant with 1394a OHCI specification Version 1.0
 - Compliant with IEEE 1394a-2000 standard, support 400Mbit/s
- On Board VGA**
- 16/32/64MB frame buffer using system memory
 - Internal AGP 8X performance
 - 128bit 2D/3D graphics engine
 - 24bit true-color RAMDAC up to 250MHZ pixel
- On Board Audio**
- Software Audio Controller with Onboard 6-Channel CODEC Compliant to AC97'
 - Support 3D Surround & Positioning, Full Duplex
- TV-OUT (for 627FW/627FWE)**
- VIA VT1622A TV encoder
 - Support NTSC/PAL TV system S-Video/AV Output
- Dimension**
- Mini ITX form factor (17cm x 17cm)

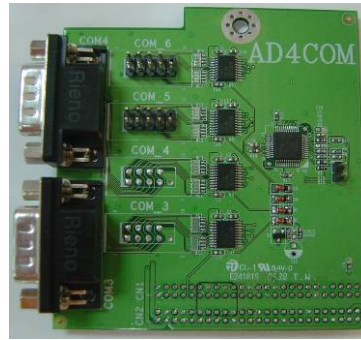
- Expansion Daughter-boards(optional)**
- AD2COM: For 2xCOM Ports Added
 - ADRTLAN-P/ADRTLAN-G: For 2nd 10/100 or 10/100/1000 Ethernet LAN
 - ADPCM: Card Bus Type I + II Supported Expansion Interface With CF Compatible Card Reader
 - ADCF: IDE Interface Supported CF Compatible Disk On Module
- DC-DC 12V Power Supply Board (optional)**
- 12V Mini-ITX Power supply
- 60Watt DC-DC power supply
 - ATX standard compliant
 - 12V operation
 - 100% silent, small footprint
 - Plugs directly into the motherboard ATX connector
- Special Function**
- ACPI supporting for OS Directed Power Management
 - MODEM Ring remote wake up
 - RTC Alarm, Keyboard Power On
 - Software power off
 - Power button
 - Meets PC 99 Requirements
 - PC Health Monitor CPU temperature, System temperature, System voltage (Vcore, Vtt, Vcc3, 5V, 12V.....), FAN speed
- Trademark**
- * Product and Company names mentioned herein may be the trademarks of their respective owners.

Expansion Daughter-boards (optional)



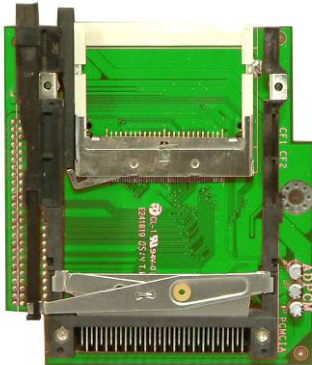
AD2COM

For 2xCOM Ports Added



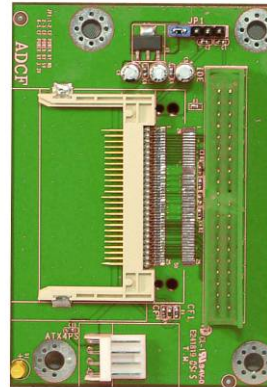
AD4COM

For 4xCOM Port Added



ADPCM

Card Bus Type I + II Supported Expansion Interface With CF Compatible Card Reader



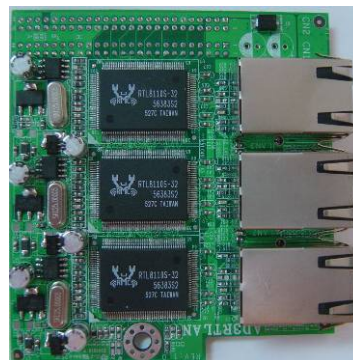
ADCF

IDE Interface Supported CF Compatible Disk On Module



ADRTLAN-P/ADRTLAN-G

For 2nd 10/100 or 10/100/1000 Ethernet LAN



AD3RTLAN-P/AD3RTLAN-G

For 2nd, 3rd, 4th 10/100 or 10/100/1000 Ethernet LAN



ADLVCOM

-LVDS Panel Controller and Serial Port
 -VIA VT6135 Support LVDS signal for LVDS Panel
 -2 Serial Port support RS232 Communication Port



AD12VB

12V Mini-ITX Power supply
 - 60Watt DC-DC power supply
 - ATX standard compliant
 - 12V operation
 - 100% silent, small footprint